



Medium Chess Puzzle # 0113

By

G Bud Games
<https://gbud.in>

January 22, 2022

Contents

Medium Chess puzzle # 0113 - Mate in 2 moves	3
Medium chess puzzle 0113	3
Solution to medium chess puzzle 0113	4
Solution 1	4
Right moves for the solution to the medium chess puzzle 0113	7
Explanation for the moves	7
Categories of medium chess puzzle 0113	7
medium chess puzzle 0113 chart	8
How to view the solution to medium chess puzzle 0113	10
How to get help for moves in the medium chess puzzle 0113 . .	11
Play chess for free	12

List of Figures

1	Solve this medium chess puzzle 0113. Mate in 2 moves @ https://gbud.in/gjhbpp2	3
2	Solve this medium chess puzzle online with solution @ https://gbud.in/gjhbpp2	3
3	Initial board position of medium chess puzzle 0113	4
4	Rf7	5
5	Re8+	5
6	Rxe8	6
7	Rxe8#	6
8	medium chess puzzle 113 chart 1	8
9	medium chess puzzle 113 chart 2	9
10	medium chess puzzle 113 chart 3	9
11	medium chess puzzle 113 chart 4	10
12	Click the solution button to view solutions @ https://gbud.in/gjhbpp2	10
13	Click the help button to get help on next move @ https://gbud.in/gjhbpp2	11
14	Solve more medium puzzles @ https://gbud.in/chsmdpz	11
15	Solve other puzzles @ https://gbud.in/chsgppz	11
16	Play chess online for free. Solve puzzles and play with friends	12
17	Solve this puzzle online by scanning this QR code or go to the link below	13

Medium Chess puzzle # 0113 - Mate in 2 moves

Solve this medium chess puzzle and improve your chess games through improvement of your chess strategies and chess tactics.

Puzzle No : 0113

Difficulty level : medium

Description : Mate in 2 moves

Next Move : White

Player level : Intermediate

Short URL for puzzle : <https://gbud.in/gjhbpp2>

Medium chess puzzle 0113

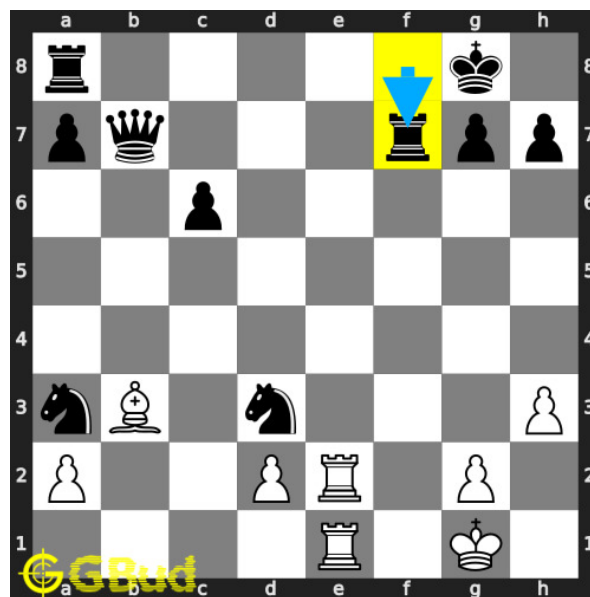


Figure 1: Solve this medium chess puzzle 0113. Mate in 2 moves @ <https://gbud.in/gjhbpp2>



Figure 2: Solve this medium chess puzzle online with solution @ <https://gbud.in/gjhbpp2>

Dont forget to check out [chess puzzles](#), [easy chess puzzles](#), [medium chess puzzles](#), [hard chess puzzles](#) and [chess puzzles collections](#) .

Solution to medium chess puzzle 0113

At this puzzle, next [move](#) is by [White](#). The objective of the puzzle is to mate in 2 moves.

See the interactive solution at the [puzzle page](#)

Solution 1

Initial board position This is the initial board position of medium chess puzzle 0113.

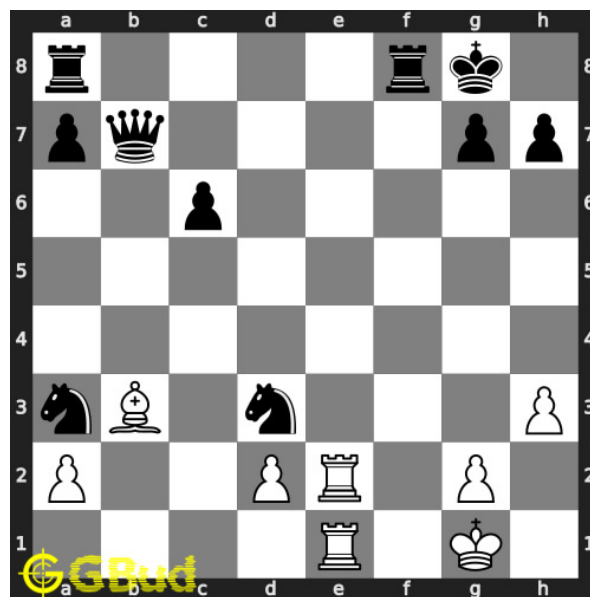


Figure 3: Initial board position of medium chess puzzle 0113

Move 1 Move by black

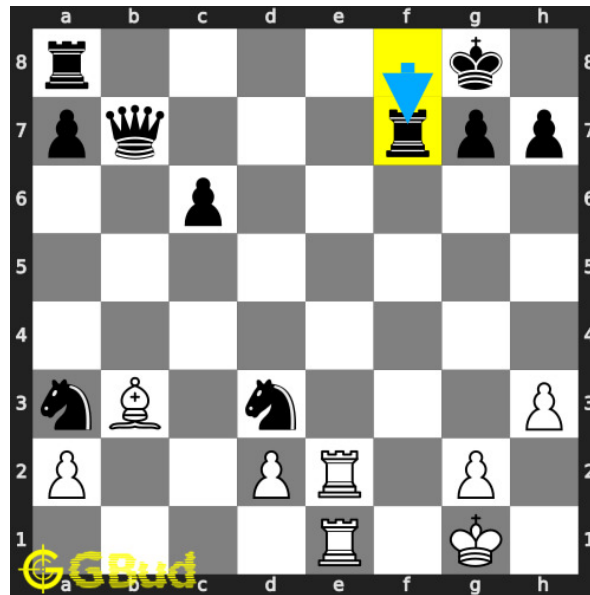


Figure 4: Rf7

opponent's **rook** blocks the **check** threat from your **bishop**. it can't **move** later as it is **pinned** to their king now.

Move 2 Move by white

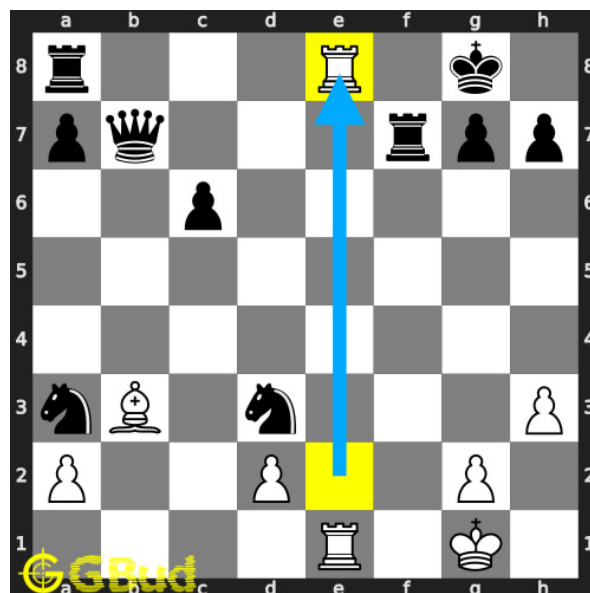


Figure 5: Re8+

your **rook** from the **battery** formation **sacrifices** itself to deflect the opponent's **rook** which is guarding the eighth **rank**.

Move 3 Move by black

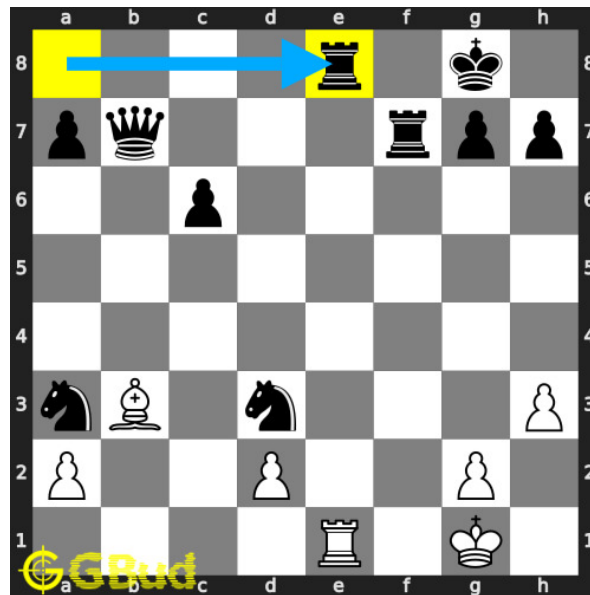


Figure 6: Rxe8

opponent's **rook captures** your **rook** as this is the only legal **move** available.

Move 4 Move by white

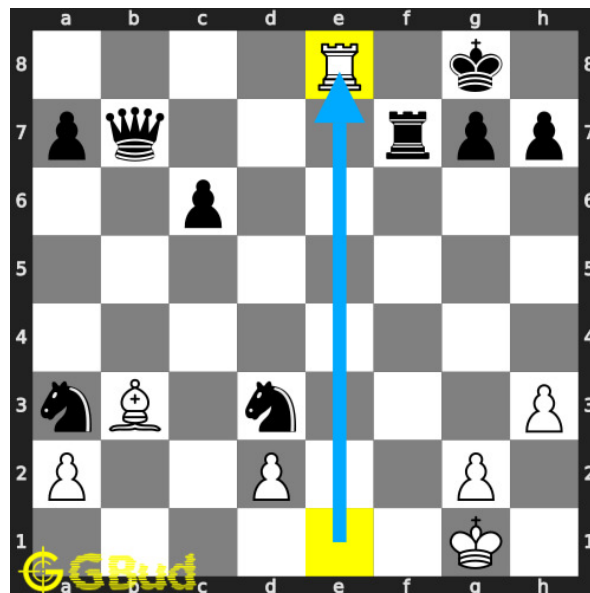


Figure 7: Rxe8#

your next **rook captures** the opponent's **rook** and **checkmate**. this is similar to a back-rank **mate** since the **king** is blocked by friendly **pieces**. this is how you can **mate** in 2 **moves**.

Right moves for the solution to the medium chess puzzle 0113

Based on the objective of the puzzle, you have to make the right moves. Following are the right moves

1. Re8+, Rxe8#

Explanation for the moves

1. Rf7 - Opponent's rook blocks the check threat from your bishop. It can't move later as it is pinned to their king now.
2. Re8+ - Your rook from the battery formation sacrifices itself to deflect the opponent's rook which is guarding the eighth rank.
3. Rxe8 - Opponent's rook captures your rook as this is the only legal move available.
4. Rxe8# - your next rook captures the opponent's rook and checkmate. This is similar to a back-rank mate since the king is blocked by friendly pieces. This is how you can mate in 2 moves.
5. For right move - You know how to use the sacrifice for a checkmate. Good job
6. For wrong move - You missed an opportunity to have a checkmate. Try again with a sacrifice of a rook.

Categories of medium chess puzzle 0113

This medium chess puzzle falls in these categories.

1. [Medium chess puzzles](#)
2. [Mate in 2 puzzles in chess](#)
3. [Endgame puzzles in chess](#)
4. [Strategy puzzles in chess](#)
5. [Mate pattern puzzles in chess](#)
6. [Pin puzzles in chess](#)
7. [Queen puzzles in chess](#)
8. [Knight puzzles in chess](#)

medium chess puzzle 0113 chart



Figure 8: medium chess puzzle 113 chart 1



Figure 9: medium chess puzzle 113 chart 2



Figure 10: medium chess puzzle 113 chart 3



Figure 11: medium chess puzzle 113 chart 4

How to view the solution to medium chess puzzle 0113

To view the [solution to this puzzle](https://gbud.in/blog/game/chess/medium-chess-puzzles/medium-chess-puzzle-0113.html), follow the steps given below

1. Go to the [puzzle page](https://gbud.in/blog/game/chess/medium-chess-puzzles/medium-chess-puzzle-0113.html)
2. Click the solution button (Key as shown [below](https://gbud.in/blog/game/chess/medium-chess-puzzles/medium-chess-puzzle-0113.html)) to view the solution



Figure 12: Click the solution button to view solutions @ <https://gbud.in/gjhbpp2>

How to get help for moves in the medium chess puzzle 0113

To get help or the possible next moves in the puzzle, , follow the steps given below

1. Go to the [puzzle page](#)
2. Click the help button (exclamation mark as shown [below](#)) to get help or suggestion on next possible [move](#)



Figure 13: Click the help button to get help on next move @ <https://gbud.in/gjhbpp2>



Figure 14: [Solve more medium puzzles @ https://gbud.in/chsmdpz](https://gbud.in/chsmdpz)



Figure 15: [Solve other puzzles @ https://gbud.in/chsgppz](https://gbud.in/chsgppz)

Play chess for free

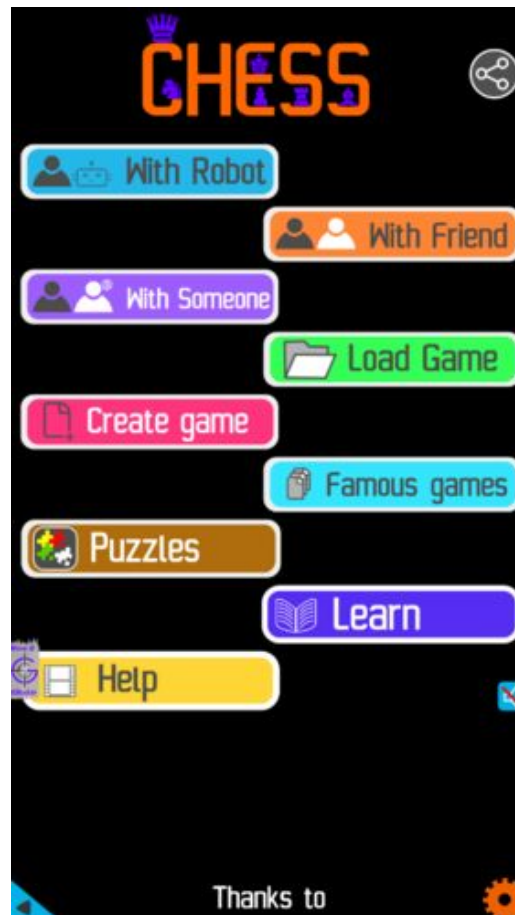


Figure 16: Play chess online for free. Solve puzzles and play with friends

Play chess for free at <https://gbud.in/chs>

We present you a platform to play chess online with friends for free. No need to install any app. You can play chess for free without registration or login.

Simple. You can do several chess related activities.

1. [solve chess puzzles](#)
2. [learn about chess](#)
3. [play chess with computer](#)
4. [play chess with friend](#)
5. [create your own chess games](#)

6. [fen viewer](#)
7. [fen editor](#)
8. [fen generator](#)
9. [pgn viewer](#)
10. [chess board editor](#)
11. [view famous chess games.](#)



Figure 17: Solve this puzzle online by scanning this QR code or go to the link below

<https://gbud.in/gjhbpp2>

Read the latest article on Medium Chess puzzle # 0113 - Mate in 2 moves by scanning this QR code or click the link

Previous article : « [Medium Chess puzzle # 0112 - Mate in 2 moves](#)

Next article : [Medium chess puzzles](#) »

[Back to top](#)

[Contact Us](#)